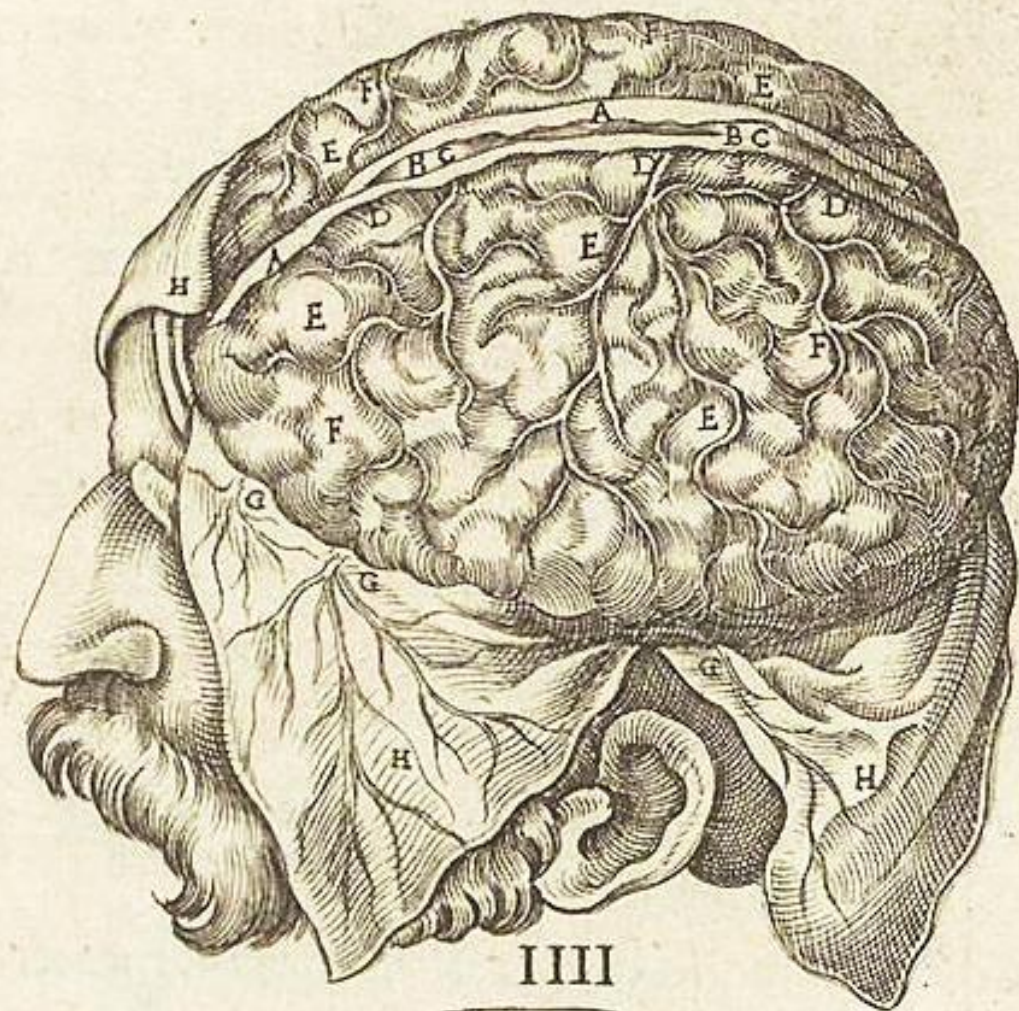
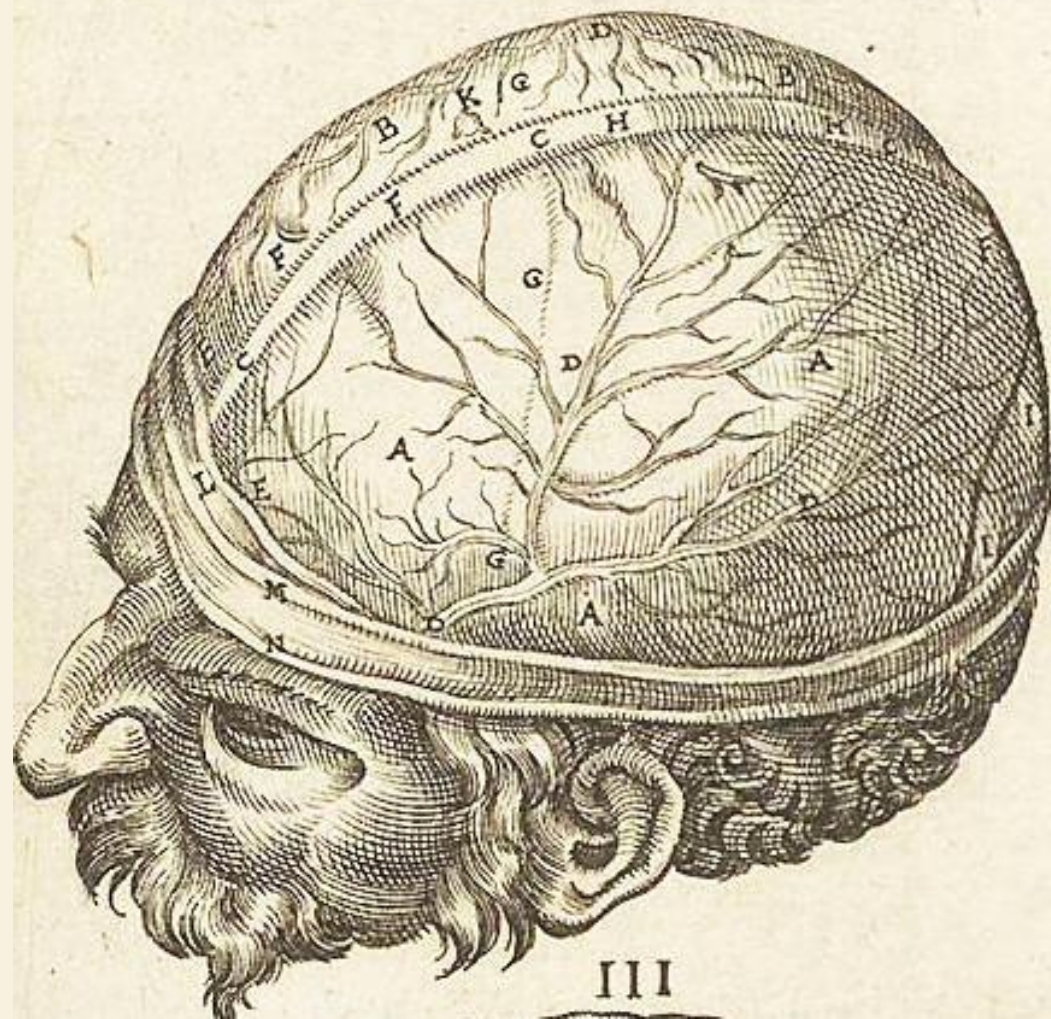


# Topografía Externa de los Hemisferios Cerebrales

*Nelson D. Villalba M.D. M.Sc.*

FIGVRA. I.

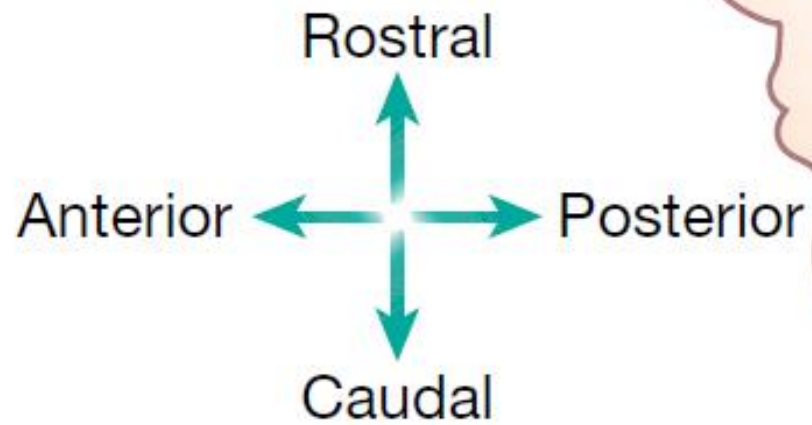
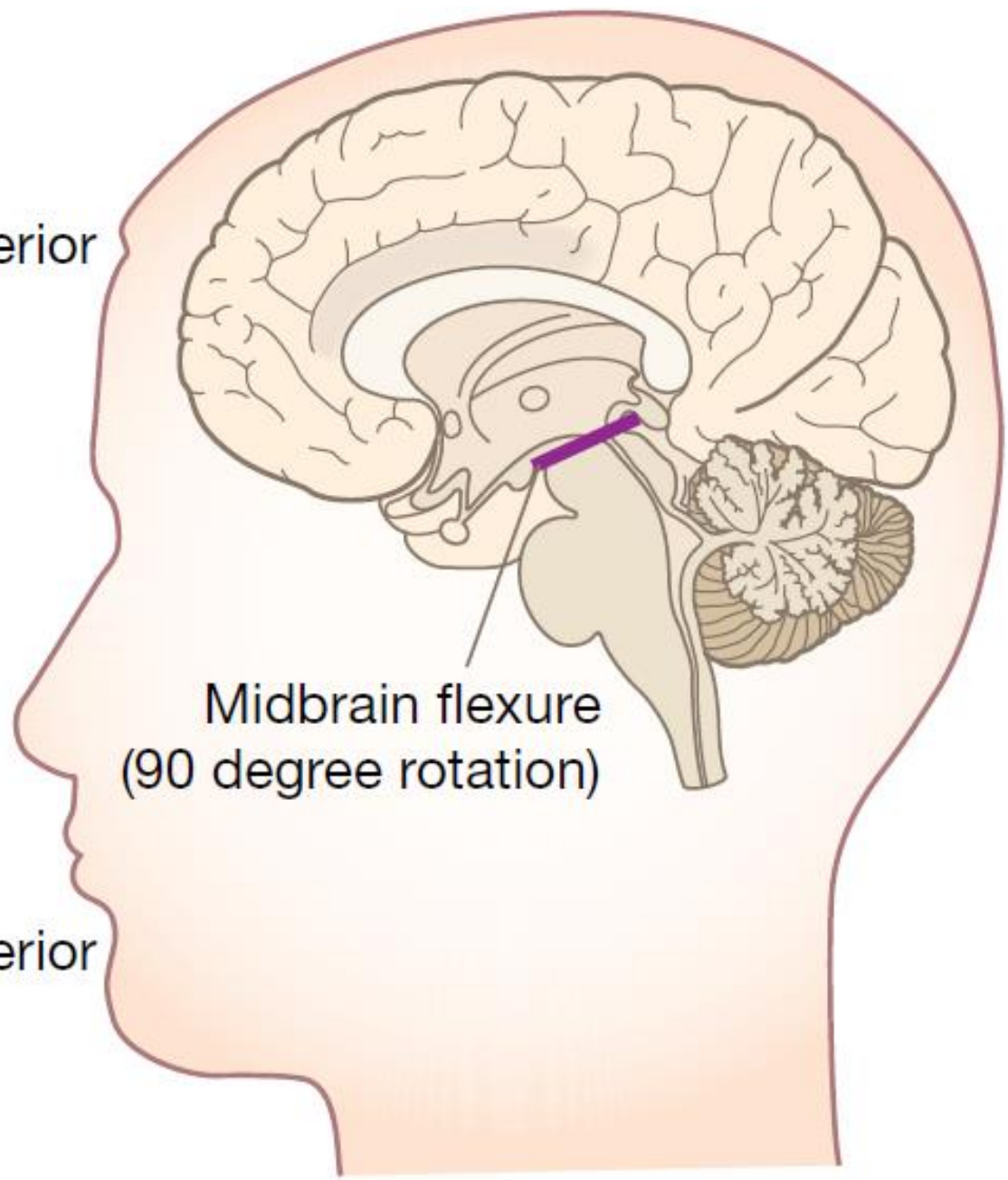
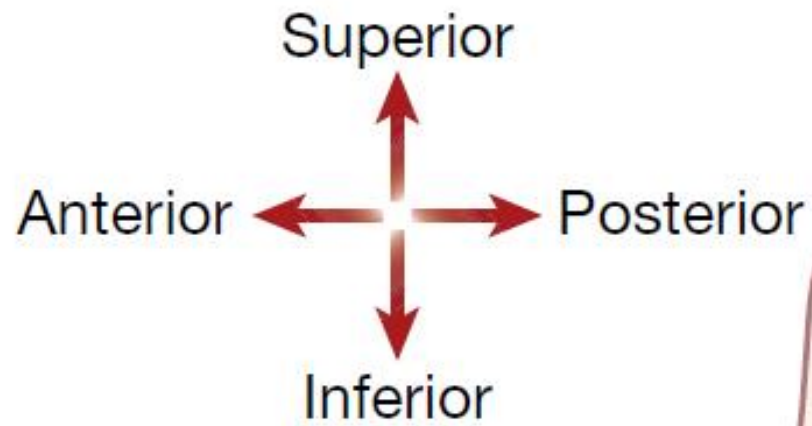
II

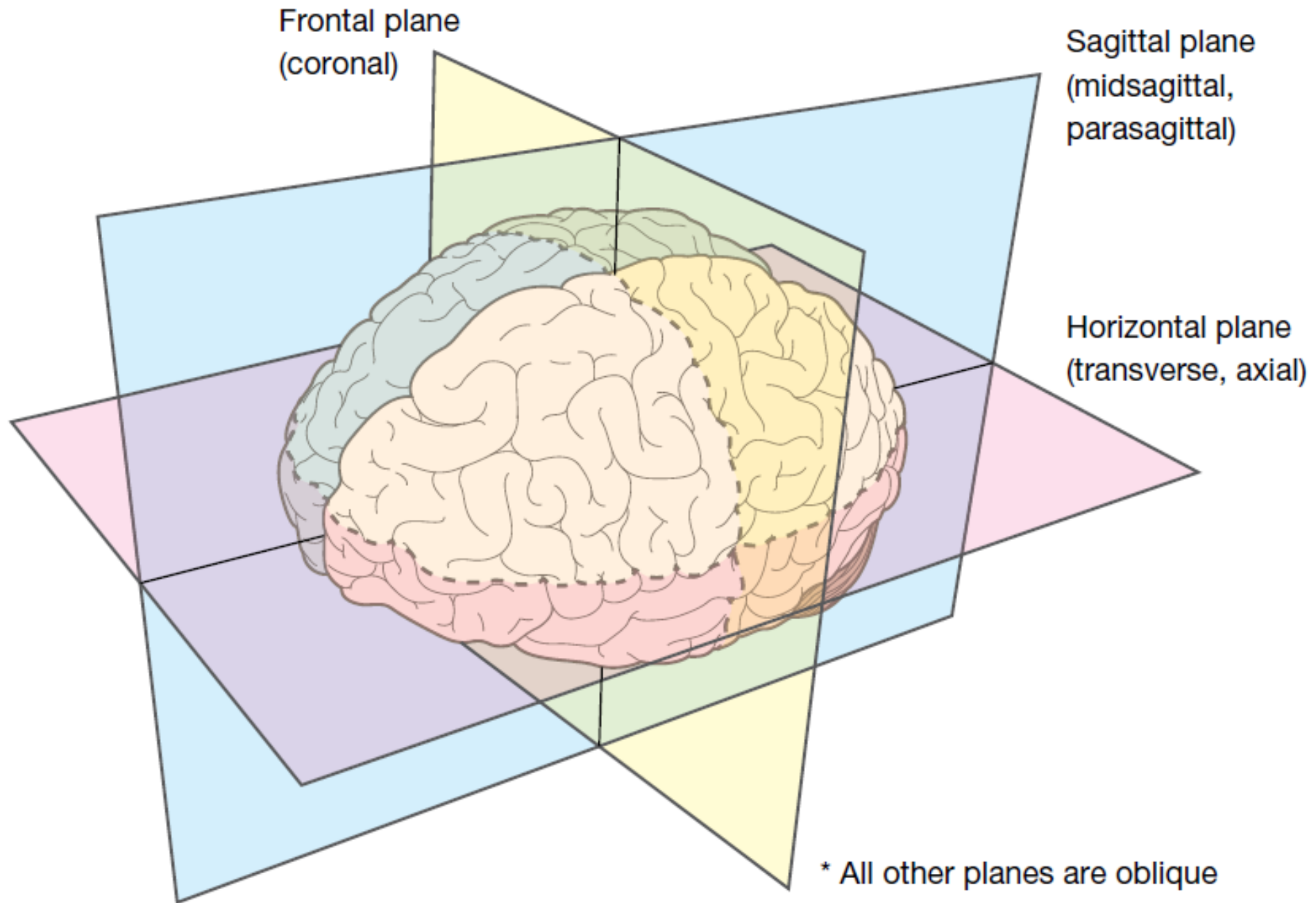


III

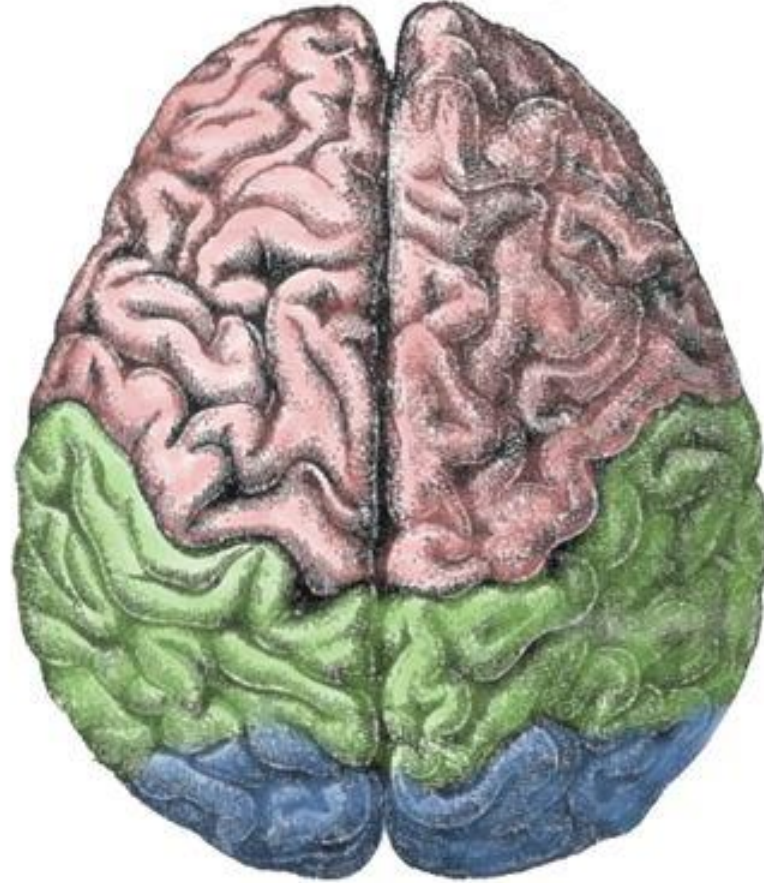
IIII



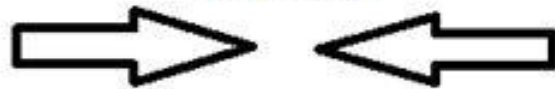


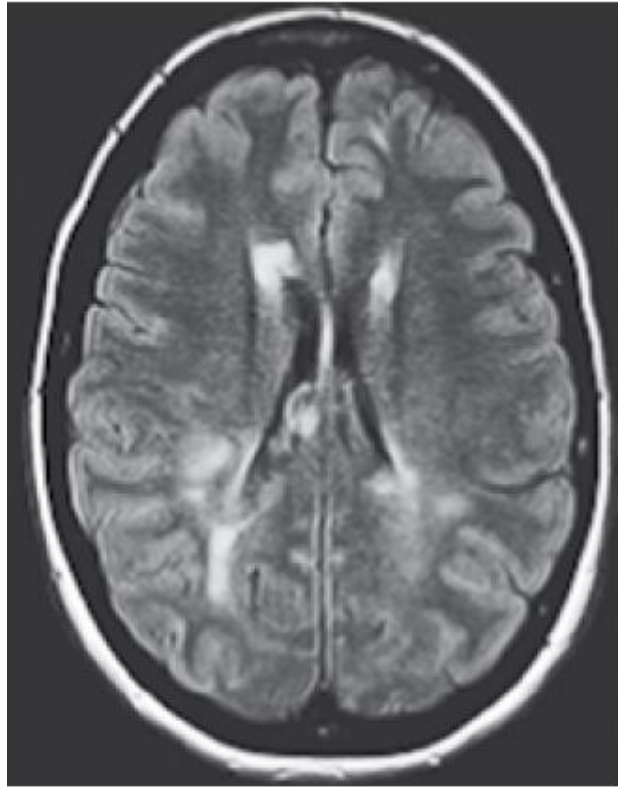


Lateral

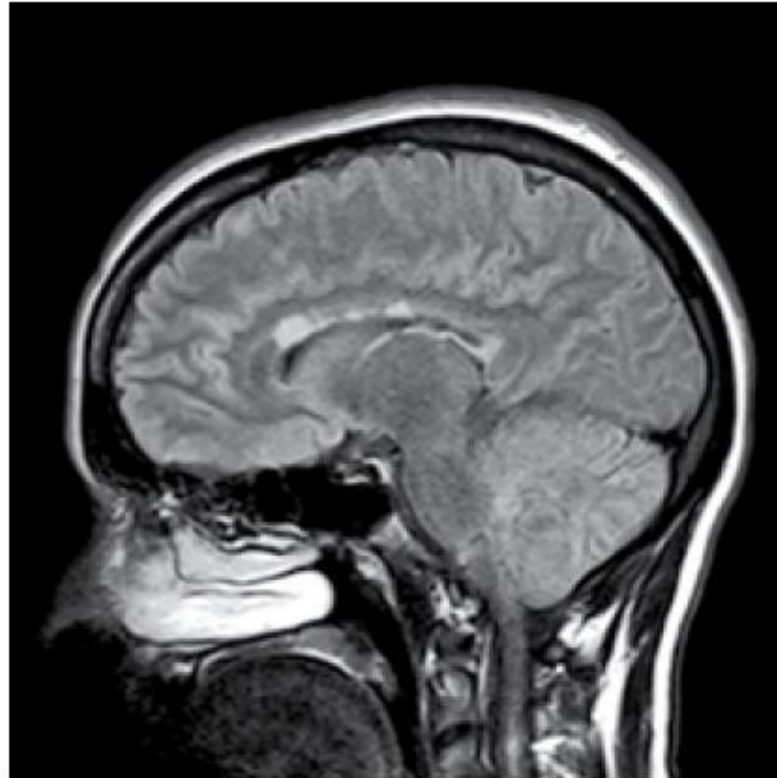


Medial





Horizontal



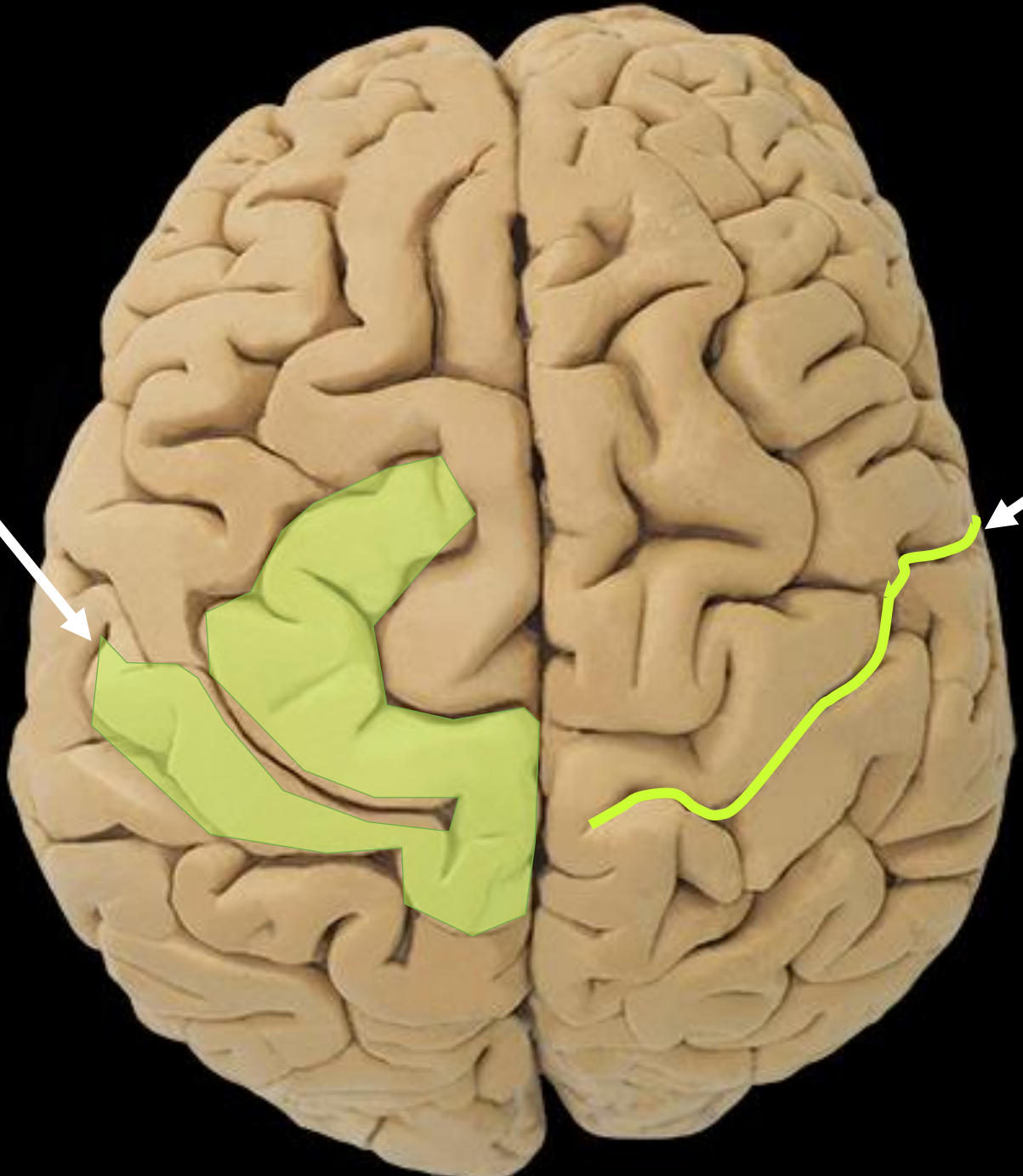
Sagittal



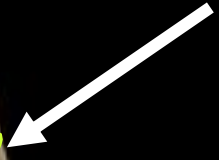
Frontal



**Giro  
o  
Circunvolución**



**Surco  
o  
Cisura**



# Cara Superior - Dorsolateral



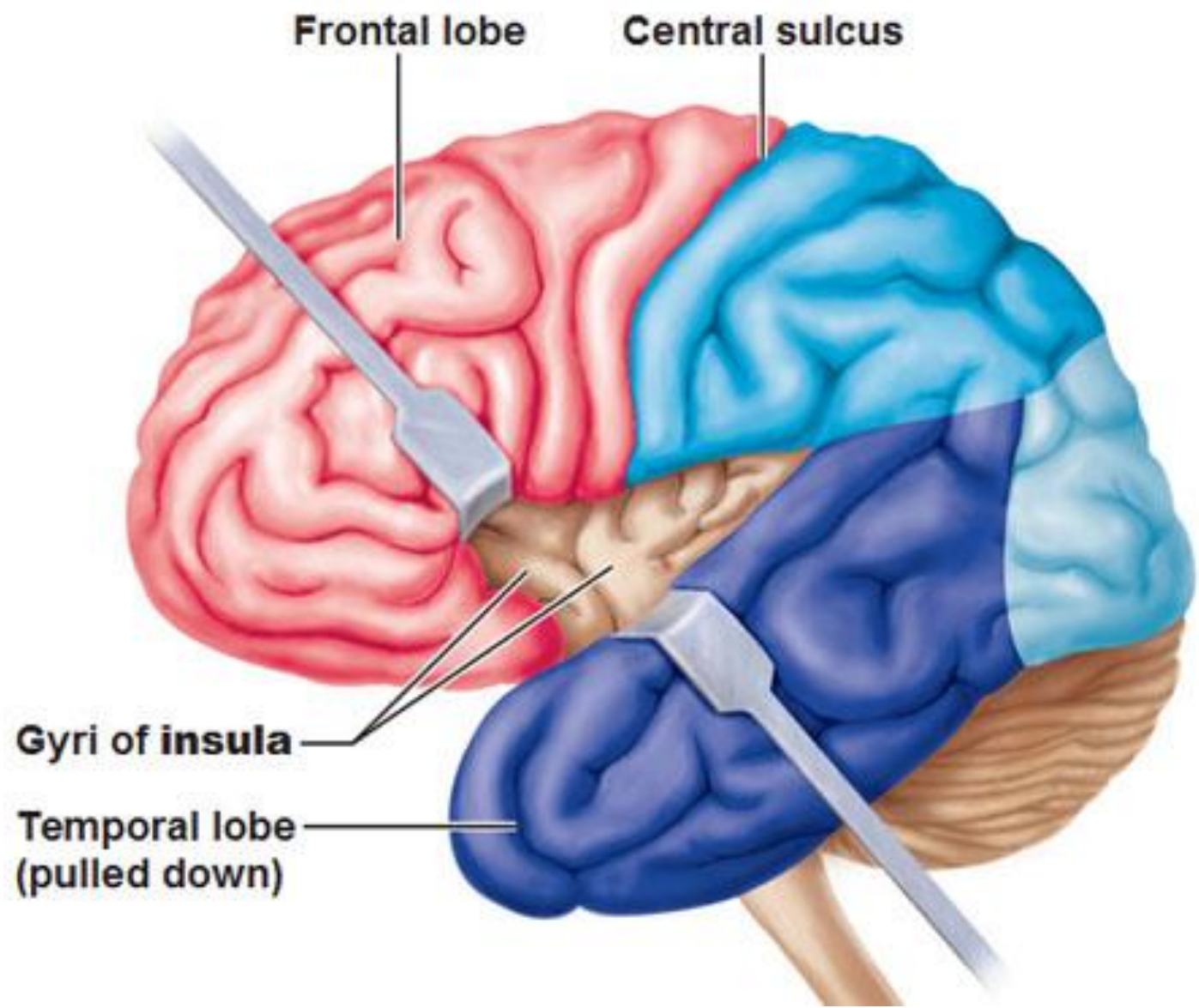


**Cara Basal**



**Cara Medial**





Frontal lobe

Central sulcus

Gyri of insula

Temporal lobe  
(pulled down)

